



August 29, 2023

IMPORTANT MESSAGE ABOUT YOUR PROPERTY

Jersey Township Trustee, ATTN: Mr. Dan Wetzel
1481 Mink St. SW
Pataskala, OH 43062

Subject: Vassell-Green Chapel Transmission Enhancements Update

Dear Neighbor,

You are receiving this letter because AEP Ohio representatives are continuing to narrow down potential line routes in Delaware and Licking counties for the Vassell-Green Chapel Transmission Enhancements. We wanted to provide you with an update on that process.

It is important to note that we have not determined any final line routes at this time. However, we have conducted initial surveys on some properties and have reduced the number of study segments being considered by under half. This work was completed following the two in-person open houses and a virtual open house to gather community input on study segments to help identify power line route solutions between Sunbury and Johnstown.

AEP Ohio representatives continue to evaluate the remaining study segments to determine a power line route for a new 345-kilovolt transmission line from Vassell Substation near Sunbury and connecting it to new electric facilities near Green Chapel Road in New Albany.

While company officials evaluate the path for the first power line, we are also collecting information to identify a separate power line corridor to support future electric demand. Enclosed you will find a map of the remaining study segments for the Vassell-Green Chapel Transmission Enhancements. A more detailed version can be seen by visiting AEPOhio.com/GreenChapel.

Landowners along the remaining study segment network can expect to hear from OR Colan (ORC), the right-of-way vendor representing AEP Ohio during this study. Our team must conduct additional field surveys along these study segments to gather environmental and cultural data to aid in line route development and route elimination. The field surveys and public feedback we received during the comment period will help us determine the final line routes. Without essential data, like environmental and cultural information, we cannot determine if a study segment is feasible or not. For more information on this process, please visit AEPTransmission.com/Property/Field-Activities.php.

ORC representatives are open to discuss property and easement options. If you have any questions or would like to further discuss survey permissions and easement options, please reach out to Steve Terlesky with ORC at 267-210-6794 or sterlesky@orcolan.com.

Thank you for your continued participation in the process.

Sincerely,

Brian Recker
AEP Ohio Project Outreach Specialist
(614) 259-8201
Outreach@AEPOhioTransmission.com

VASSELL - GREEN CHAPEL TRANSMISSION ENHANCEMENTS

AEP Ohio officials plan to assess the feasibility of adding new equipment to the electric transmission grid in Delaware and Licking counties. Additional electric equipment is needed to support economic development and maintain electric reliability.

WHAT

Company representatives are investigating the possibility of constructing a new 345-kilovolt transmission line between Vassell Substation near Sunbury and new electric facilities near Green Chapel Road in New Albany, as the first addition to the local electric transmission grid.

While company officials evaluate the potential path for the first power line, they also plan to collect information to identify a separate power line corridor to support future electric demand.

WHY

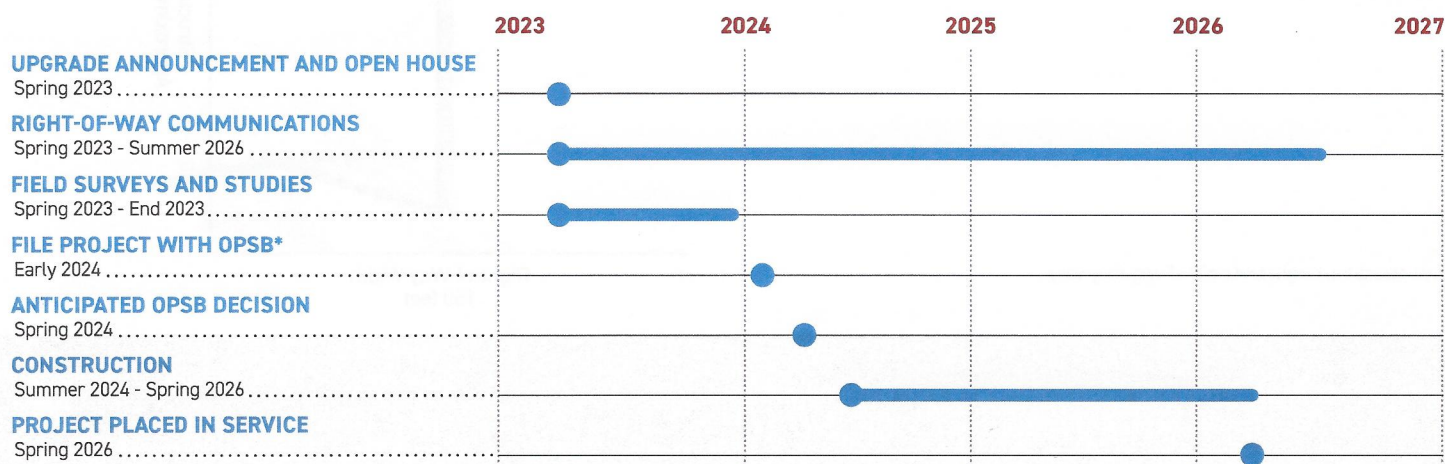
New electric facilities are needed to connect new customers to the electric grid and maintain reliable electricity for customers in the area. Customer demand for electricity is anticipated to grow about four times the current need over the next five years.

WHERE

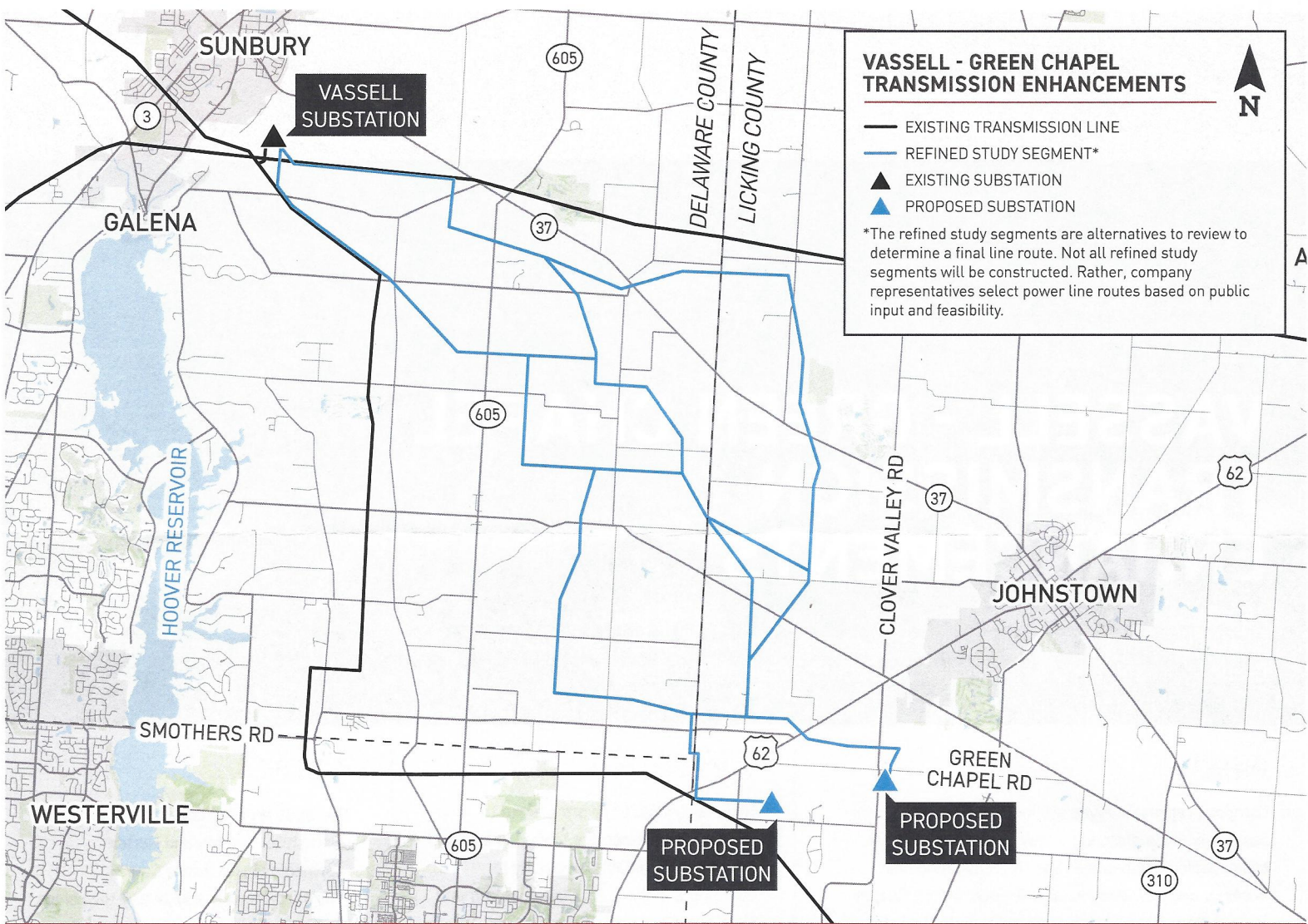
The study area includes:

- Berkshire, Trenton and Harlem townships in Delaware County
- Hartford, Monroe and Jersey townships in Licking County
- Plain Township in Franklin County
- City of New Albany
- City of Johnstown

PROPOSED SCHEDULE FOR FIRST POWER GRID ADDITION



Timeline Subject to Change
*OPSB = Ohio Power Siting Board



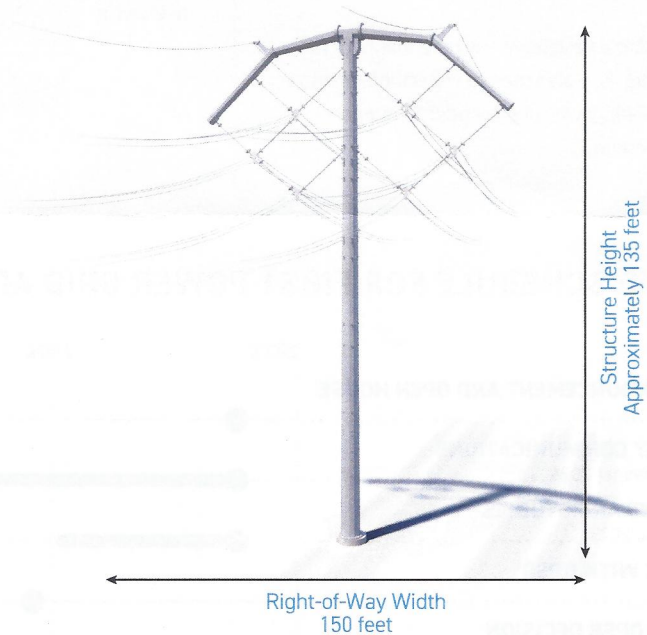
TYPICAL STRUCTURES

Company representatives anticipate utilizing AEP's BOLD (Breakthrough in Overhead Line Design) technology, which is capable of operating more efficiently than conventional transmission pole designs.

Structure Height: Approximately 135 feet*

Right-of-Way Width: 150 feet*

*Exact structure, height and right-of-way may vary



WE VALUE YOUR INPUT. PLEASE SEND COMMENTS AND QUESTIONS TO:

JOE DEMAREE • PROJECT OUTREACH SPECIALIST
 OUTREACH@AEPOHIOTRANSMISSION.COM • 614-259-8201
 AEPOHIO.COM/GREENCHAPEL



08/18/2023