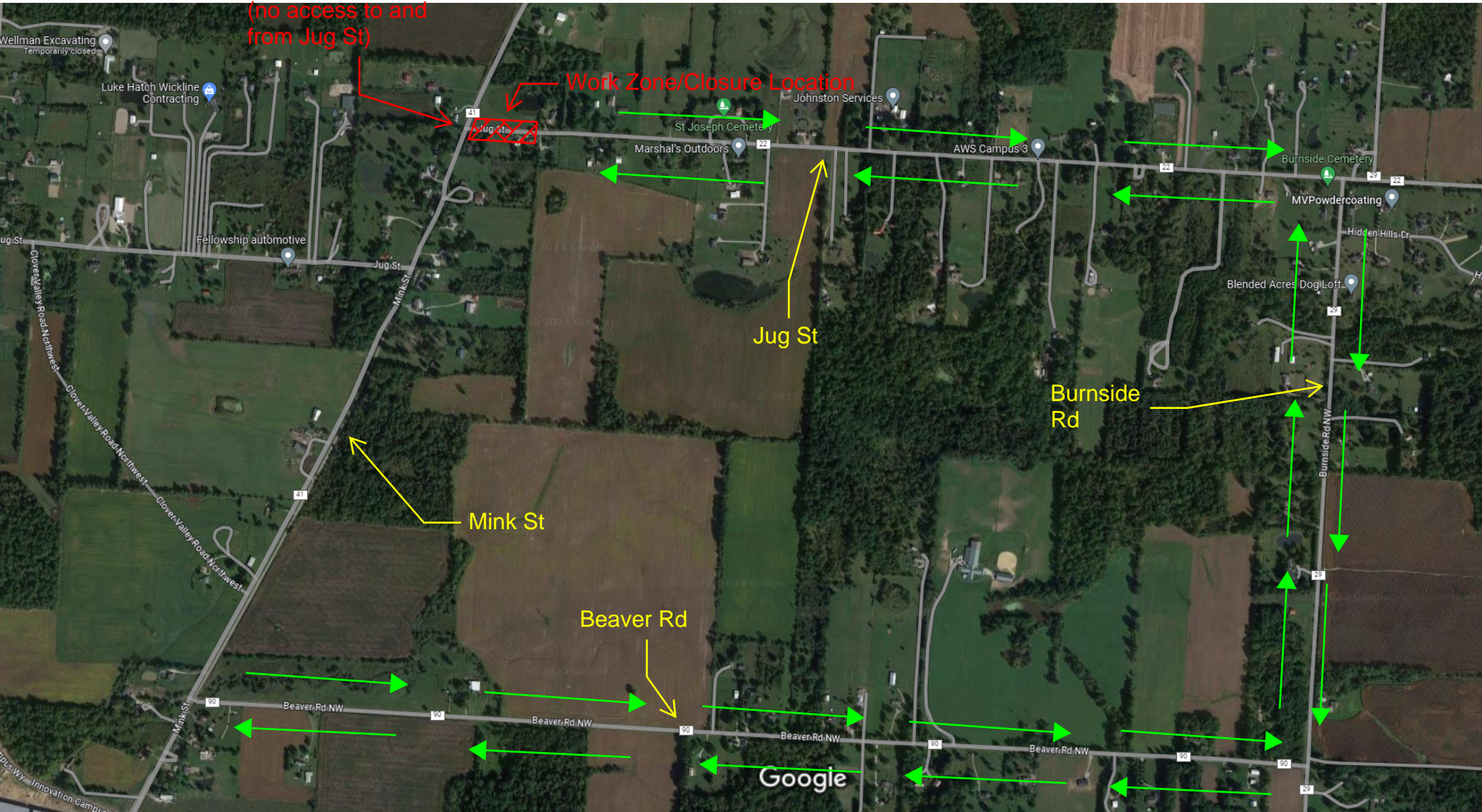


2-Way thru traffic on Mink St is maintained (no access to and from Jug St)

# Jug Street (East) Detour Map



Imagery ©2023 Airbus, CNES / Airbus, Maxar Technologies, State of Ohio / OSIP, U.S. Geological Survey, USDA/FPAC/GEO, Map data ©2023 500 ft

Closure Start: On or around 10/30/23 for 2 weeks

